

# The Copperwynd

**Modern Shiplap with Craftsman Details**



# The Copperwynd

**Modern meets Craftsman**

**Building Area: 57x71**

*2,307 First Floor sq. feet*

*221 Front Porch sq. feet*

*331 Lanai sq. feet*

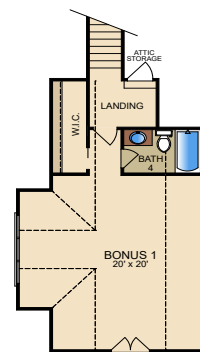
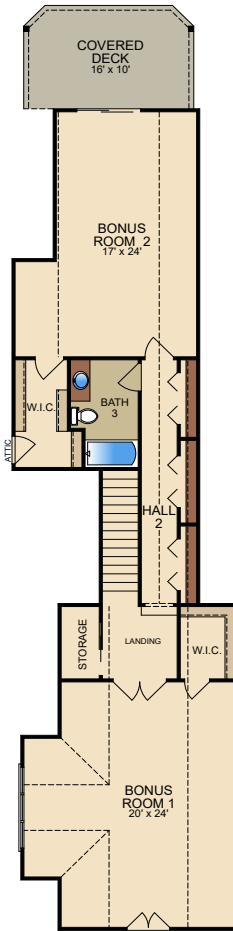
*156 Optional Covered  
Balcony sq. feet*

*780 Garage with Extended  
Golf Cart Door sq. feet*

**3,795 Total sq. feet**

**Have questions?  
Call (910) 397-2777**

*Not to scale, rendering may not reflect exact floor plan.*



*443 Optional Front Bonus Room  
with Full Bath sq. feet*

*1,223 Optional Double Bonus Rooms  
with Full Bath sq. feet*